

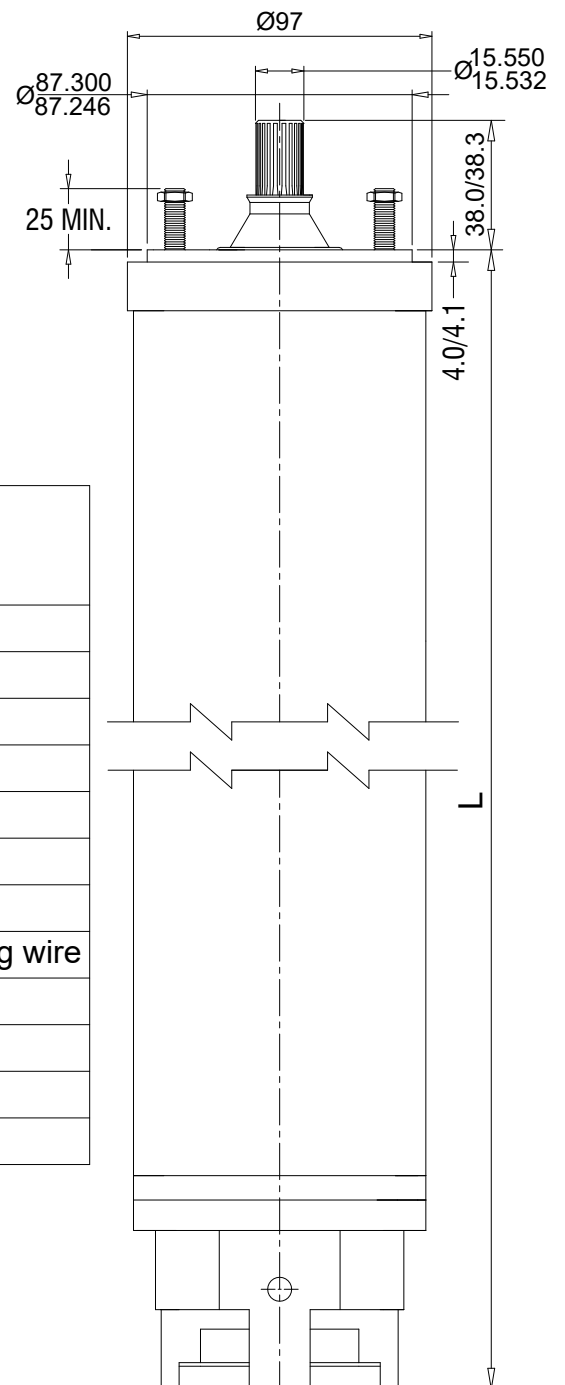
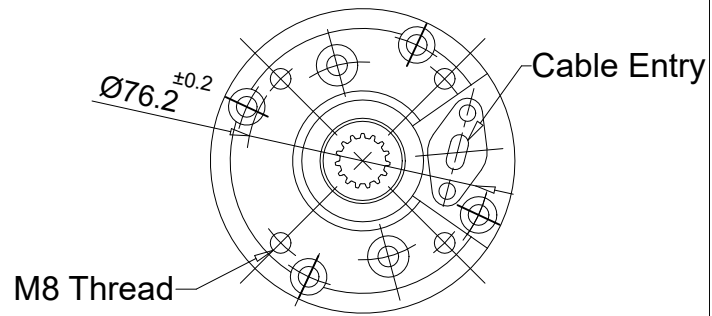
4" water filled rewindable motors

Dimensions and Weights : AZ Series Motors

DIMENSIONS AND WEIGHTS

SINGLE-PHASE MOTORS 50Hz

P2		L	Weight
kW	HP	mm	Kg
0.37	0.5	374.0	11
0.55	0.75	389.0	12
0.75	1.0	414.0	13



MATERIAL SPECIFICATIONS

Component	Material
Motor Shell	Stainless Steel
Sand Guard	CR (Neoprene)
Stud	AISI 304
Upper Bearing Housing	Cast Iron
Oil Seal	CR (Neoprene) with S.S.Spring
Shaft	AISI 420
Rotor	Aluminium Die Cast
Winding	Polyester wrapped copper winding wire
Lower Bearing Housing	Cast Iron
Thrust Bearing Housing	Cast Iron
Diaphragm Rubber	CR (Neoprene)
Diaphragm Plate	Stainless Steel

NOTE :-

ALL DIMENSIONS ARE IN mm.

SPECIFICATIONS SUBJECT TO CHANGE DUE TO CONTINUOUS IMPROVEMENT.