

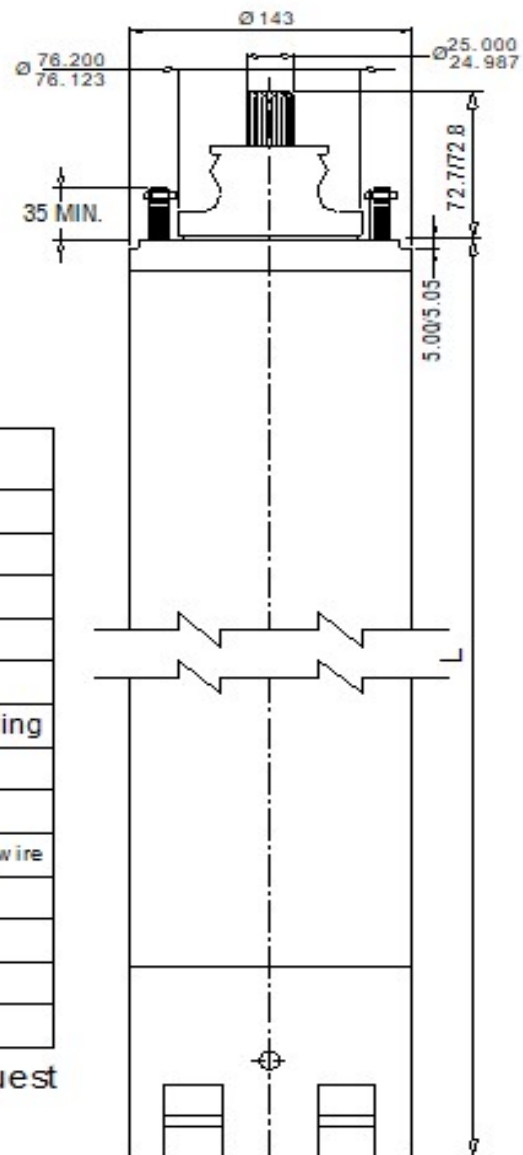
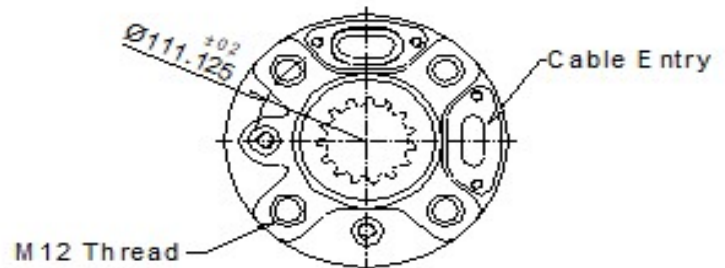
6" water filled rewindable motors

Dimensions and Weights : FULL STAINLESS STEEL TUBE MOTOR

DIMENSIONS AND WEIGHTS

THREE-PHASE MOTORS 50Hz

P2		L	Weight
kW	HP	mm	Kg
1.5	2.0	501	34
2.2	3.0	521	37
3.0	4.0	541	40
3.7	5.0	561	43
4.5	6.0	581	45
5.5	7.5	606	48
7.5	10.0	631	51
9.3	12.5	681	59
11.0	15.0	731	63
13.0	17.5	813	71
15.0	20.0	863	76
18.5	25.0	888	80
22.0	30.0	938	85
26.0	35.0	1004	96
30.0	40.0	1054	103



MATERIAL SPECIFICATIONS

Component	Material
Motor Shell	Stainless Steel
Sand Guard	CR (Neoprene)
Stud	AISI 304
Upper Bearing Housing	Cast Iron*
Mechanical Seal	Ceramic / Carbon
Oil Seal	CR (Neoprene) with S.S.Spring
Shaft	AISI 431
Rotor	Copper
Winding	Polyester wrapped copper winding wire
Lower Bearing housing	Cast Iron
Thrust Bearing housing	Cast Iron*
Diaphragm Rubber	CR (Neoprene)
Diaphragm Plate	Stainless Steel

*Stainless steel components are available on request

NOTE :-

ALL DIMENSIONS ARE IN mm.

SPECIFICATIONS SUBJECT TO CHANGE DUE TO CONTINUOUS IMPROVEMENT.