

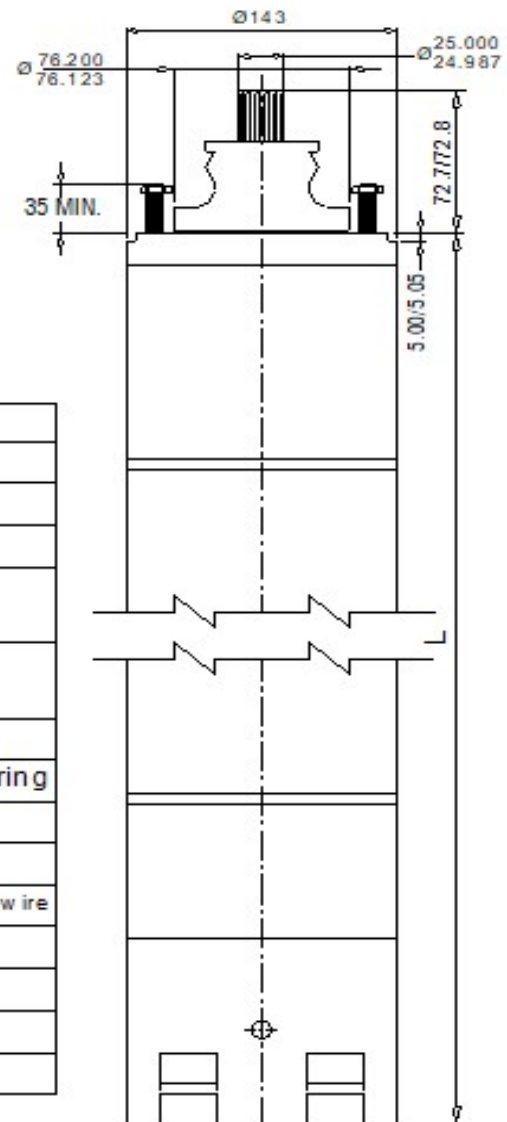
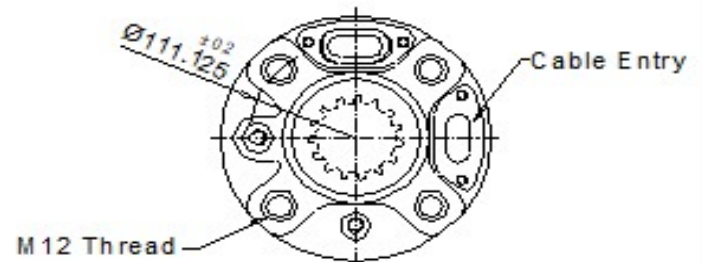
6" water filled rewindable motors

Dimensions and Weights : ZL MOTOR

DIMENSIONS AND WEIGHTS

THREE-PHASE MOTORS 50Hz

P2		L	Weight
kW	HP	mm	Kg
5.5	7.5	612	46
7.5	10.0	637	49
9.3	12.5	687	54
11.0	15.0	737	58
13.0	17.5	787	65
15.0	20.0	837	71
18.5	25.0	893	76
22.0	30.0	943	80



MATERIAL SPECIFICATIONS

Component	Material
Motor Shell	Stainless Steel
Sand Guard	CR (Neoprene)
Stud	AISI 304
Upper Bearing Housing (Upper Side)	Cast Iron
Upper Bearing Housing (lower Side)	Cast Iron
Mechanical Seal	Ceramic / Carbon
Oil Seal	CR (Neoprene) with S. S. Spring
Shaft	AISI 431
Rotor	Copper
Winding	Polyester wrapped copper winding wire
Lower Bearing housing	Cast Iron
Thrust Bearing housing	Cast Iron
Diaphragm Rubber	CR (Neoprene)
Diaphragm Plate	Cast Iron

NOTE ->

ALL DIMENSIONS ARE IN mm.

SPECIFICATIONS SUBJECT TO CHANGE DUE TO CONTINUOUS IMPROVEMENT.